

SW SERIES: OVER-THE-SIDE HEATERS

MODEL SW6

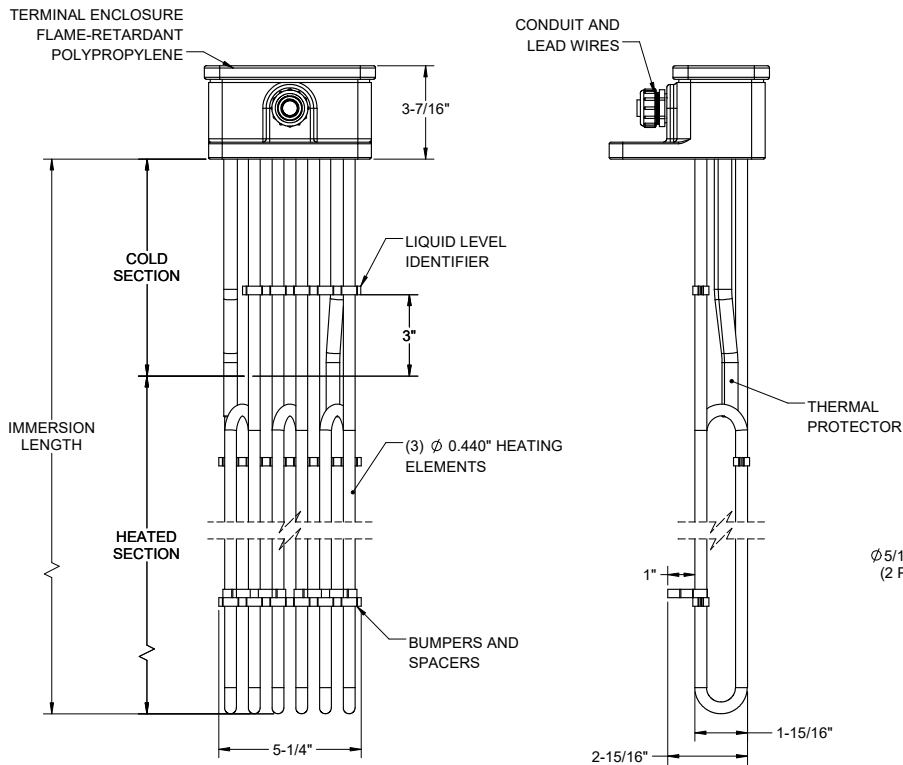
QUICK SPECIFICATIONS		CUSTOMIZABLE FEATURES
WATTAGES:	5,000 - 36,000 Watts	The following are configurable based on application requirements: <ul style="list-style-type: none"> • Wattage, Voltage, Phase • Immersion Length • Cold Length • Conduit Length • Element Sheath Material
VOLTAGES:	120 - 600 Volts	
PHASE:	1 & 3 Phase	
TEMP RANGE:		
UL/CSA Listed Version: Suitable in Solutions up to 230 °F		
Metal Head Version: Suitable in Solutions up to 300 °F		
WATT DENSITY:	35 Watts / in² Standard	
For custom configurations or additional options, please consult factory.		



SW6 METAL OVER THE SIDE HEATERS							
SPECIFICATIONS					304 SS	316 SS	TITANIUM
Volts (3-PH)	Watts	Immersion Length	Heated Length	Cold Length	Part Number	Part Number	Part Number
240	3,000	11"	5"	6"	SW6-3F-3E11-6-T*	SW6-3S-3E11-6-T*	SW6-3T-3E11-6-T*
480					SW6-3F-3M11-6-T*	SW6-3S-3M11-6-T*	SW6-3T-3M11-6-T*
240	4,500	14"	7"	7"	SW6-3F-4.5E14-7-T*	SW6-3S-4.5E14-7-T*	SW6-3T-4.5E14-7-T*
480					SW6-3F-4.5M14-7-T*	SW6-3S-4.5M14-7-T*	SW6-3T-4.5M14-7-T*
240	6,000	17"	10"	7"	SW6-3F-6E17-7-T*	SW6-3S-6E17-7-T*	SW6-3T-6E17-7-T*
480					SW6-3F-6M17-7-T*	SW6-3S-6M17-7-T*	SW6-3T-6M17-7-T*
240	7,500	20"	13"	7"	SW6-3F-7.5E20-7-T*	SW6-3S-7.5E20-7-T*	SW6-3T-7.5E20-7-T*
480					SW6-3F-7.5M20-7-T*	SW6-3S-7.5M20-7-T*	SW6-3T-7.5M20-7-T*
240	9,000	23"	15"	8"	SW6-3F-9E23-8-T*	SW6-3S-9E23-8-T*	SW6-3T-9E23-8-T*
480					SW6-3F-9M23-8-T*	SW6-3S-9M23-8-T*	SW6-3T-9M23-8-T*
240	12,000	29"	20"	9"	SW6-3F-12E29-9-T*	SW6-3S-12E29-9-T*	SW6-3T-12E29-9-T*
480					SW6-3F-12M29-9-T*	SW6-3S-12M29-9-T*	SW6-3T-12M29-9-T*
240	15,000	35"	25"	10"	SW6-3F-15E35-10-T*	SW6-3S-15E35-10-T*	SW6-3T-15E35-10-T*
480					SW6-3F-15M35-10-T*	SW6-3S-15M35-10-T*	SW6-3T-15M35-10-T*
240	18,000	40"	30"	10"	SW6-3F-18E40-10-T*	SW6-3S-18E40-10-T*	SW6-3T-18E40-10-T*
480					SW6-3F-18M40-10-T*	SW6-3S-18M40-10-T*	SW6-3T-18M40-10-T*
480	21,000	45"	35"	10"	SW6-3F-21M45-10-T*	SW6-3S-21M45-10-T*	SW6-3T-21M45-10-T*
480	24,000	47"	37"	10"	SW6-3F-24M47-10-T*	SW6-3S-24M47-10-T*	SW6-3T-24M47-10-T*
480	27,000	54"	44"	10"	SW6-3F-27M54-10-T*	SW6-3S-27M54-10-T*	SW6-3T-27M54-10-T*
480	30,000	59"	49"	10"	SW6-3F-30M59-10-T*	SW6-3S-30M59-10-T*	SW6-3T-30M59-10-T*
480	36,000	68"	58"	10"	SW6-6F-36M68-10-T*	SW6-6S-36M68-10-T*	SW6-6T-36M68-10-T*

*Thermal protector options and part numbers can be found in the tables below.

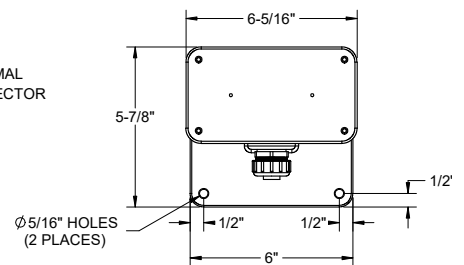
REFERENCE DIMENSIONS



Thermal Protector Guide		
TYPE	MODEL NUMBER	TEMP RANGE
Replaceable Thermal Protectors	T1	Up to 180°F
	T4	Up to 230°F
	T5*	Up to 300°F
Resettable Thermal Protectors	T2	Up to 180°F
	T6	Up to 230°F
	T7*	Up to 300°F

*Not UL/CSA Listed

TOP VIEW



ORDERING AND CONTACT INFO

FOR ORDERS, PLEASE CONTACT YOUR LOCAL METAL FINISHING EQUIPMENT SUPPLIER.
FOR MORE INFO ON OUR PRODUCTS SEE OUR WEBSITE AT WWW.HEATMAXHEATERS.COM