

# SW SERIES: OVER-THE-SIDE HEATERS

## MODEL SW3

QUICK SPECIFICATIONS		CUSTOMIZABLE FEATURES
<b>WATTAGES:</b>	1,000 - 12,000 Watts	The following are configurable based on application requirements: <ul style="list-style-type: none"> <li>• Wattage, Voltage, Phase</li> <li>• Immersion Length</li> <li>• Cold Length</li> <li>• Conduit Length</li> <li>• Element Sheath Material</li> </ul>
<b>VOLTAGES:</b>	120 - 600 Volts	
<b>PHASE:</b>	1 & 3 Phase	
<b>TEMP RANGE:</b>		
UL/CSA Listed Version: Suitable in Solutions up to <b>230 °F</b>		
Metal Head Version: Suitable in Solutions up to <b>300 °F</b>		
<b>WATT DENSITY:</b>	<b>35 Watts / in<sup>2</sup> Standard</b>	
For custom configurations or additional options, please consult factory.		

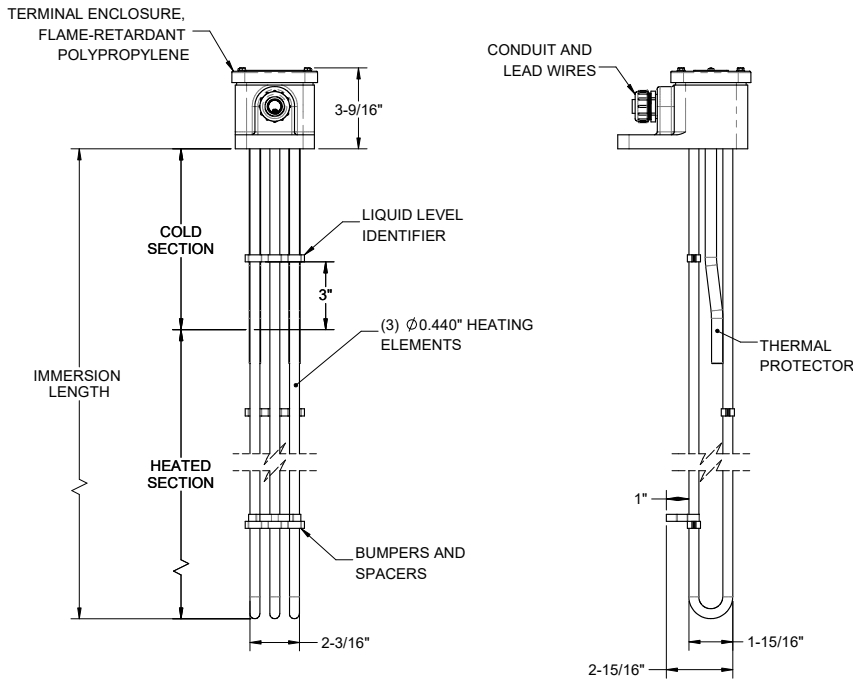


FOR VERTICAL INSTALLATION ONLY

SW3 METAL OVER THE SIDE HEATERS							
SPECIFICATIONS					304 SS	316 SS	TITANIUM
Volts (1-PH)	Watts	Immersion Length	Heated Length	Cold Length	Part Number	Part Number	Part Number
240	1,000	11"	5"	6"	SW3-3F-1EX11-6-T*	SW3-3S-1EX11-6-T*	SW3-3T-1EX11-6-T*
480					SW3-3F-1MX11-6-T*	SW3-3S-1MX11-6-T*	SW3-3T-1MX11-6-T*
240	2,000	17"	10"	7"	SW3-3F-2EX17-7-T*	SW3-3S-2EX17-7-T*	SW3-3T-2EX17-7-T*
480					SW3-3F-2MX17-7-T*	SW3-3S-2MX17-7-T*	SW3-3T-2MX17-7-T*
240	3,000	23"	16"	7"	SW3-3F-3EX23-7-T*	SW3-3S-3EX23-7-T*	SW3-3T-3EX23-7-T*
480					SW3-3F-3MX23-7-T*	SW3-3S-3MX23-7-T*	SW3-3T-3MX23-7-T*
240	4,000	29"	20"	9"	SW3-3F-4EX29-9-T*	SW3-3S-4EX29-9-T*	SW3-3T-4EX29-9-T*
480					SW3-3F-4MX29-9-T*	SW3-3S-4MX29-9-T*	SW3-3T-4MX29-9-T*
240	5,000	35"	25"	10"	SW3-3F-5EX35-10-T*	SW3-3S-5EX35-10-T*	SW3-3T-5EX35-10-T*
480					SW3-3F-5MX35-10-T*	SW3-3S-5MX35-10-T*	SW3-3T-5MX35-10-T*
240	6,000	40"	30"	10"	SW3-3F-6EX40-10-T*	SW3-3S-6EX40-10-T*	SW3-3T-6EX40-10-T*
480					SW3-3F-6MX40-10-T*	SW3-3S-6MX40-10-T*	SW3-3T-6MX40-10-T*
240	8,000	47"	37"	10"	SW3-3F-8EX47-10-T*	SW3-3S-8EX47-10-T*	SW3-3T-8EX47-10-T*
480					SW3-3F-8MX47-10-T*	SW3-3S-8MX47-10-T*	SW3-3T-8MX47-10-T*
240	9,000	54"	44"	10"	SW3-3F-9EX54-10-T*	SW3-3S-9EX54-10-T*	SW3-3T-9EX54-10-T*
480					SW3-3F-9MX54-10-T*	SW3-3S-9MX54-10-T*	SW3-3T-9MX54-10-T*
240	10,000	59"	49"	10"	SW3-3F-10EX59-10-T*	SW3-3S-10EX59-10-T*	SW3-3T-10EX59-10-T*
480					SW3-3F-10MX59-10-T*	SW3-3S-10MX59-10-T*	SW3-3T-10MX59-10-T*
240	12,000	68"	58"	10"	SW3-3F-12EX68-10-T*	SW3-3S-12EX68-10-T*	SW3-3T-12EX68-10-T*
480					SW3-3F-12MX68-10-T*	SW3-3S-12MX68-10-T*	SW3-3T-12MX68-10-T*

\*Thermal protector options and part numbers can be found in the tables below.

## REFERENCE DIMENSIONS



Thermal Protector Guide		
TYPE	MODEL NUMBER	TEMP RANGE
Replaceable Thermal Protectors	T1	Up to 180 °F
	T4	Up to 230 °F
	T5*	Up to 300 °F
Resettable Thermal Protectors	T2	Up to 180 °F
	T6	Up to 230 °F
	T7*	Up to 300 °F

\*Not UL/CSA Listed

## ORDERING AND CONTACT INFO

FOR ORDERS, PLEASE CONTACT YOUR LOCAL METAL FINISHING EQUIPMENT SUPPLIER.  
FOR MORE INFO ON OUR PRODUCTS SEE OUR WEBSITE AT [WWW.HEATMAXHEATERS.COM](http://WWW.HEATMAXHEATERS.COM)