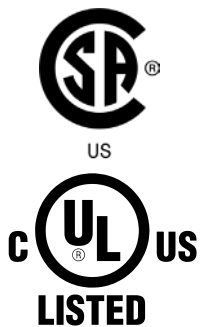
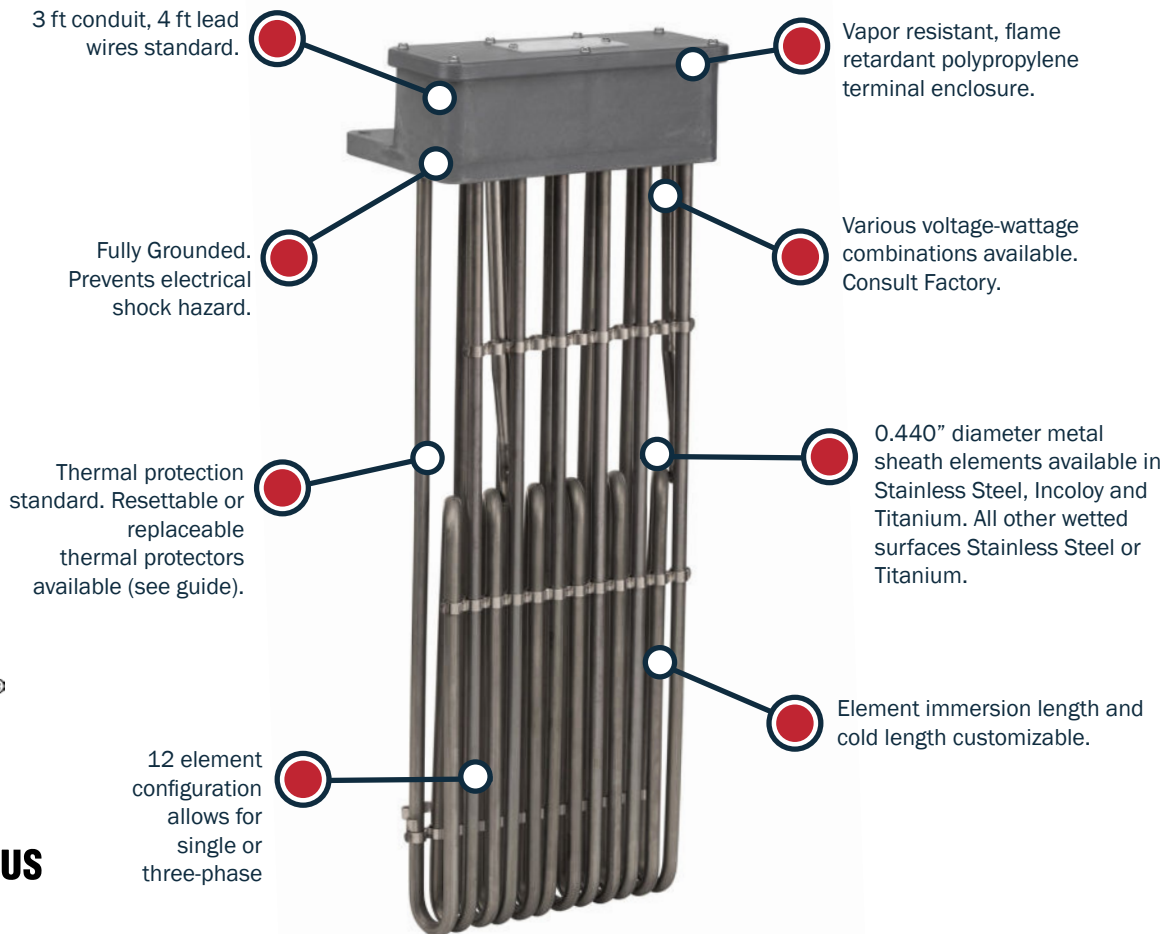


SW SERIES: OVER-THE-SIDE HEATERS

MODEL DSW12

QUICK SPECIFICATIONS		CUSTOMIZABLE FEATURES
WATTAGES:	1,000 - 29,000 Watts	The following are configurable based on application requirements: <ul style="list-style-type: none"> • Wattage, Voltage, Phase • Immersion Length • Cold Length • Conduit Length • Element Sheath Material
VOLTAGES:	120 - 600 Volts	
PHASE:	1 & 3 Phase	
TEMP RANGE:		
UL/CSA Listed Version: Suitable in Solutions up to 230 ° F		
Metal Head Version: Suitable in Solutions up to 300 ° F		
WATT DENSITY:	Derated to 18 Watts / in²	
For custom configurations or additional options, please consult factory.		



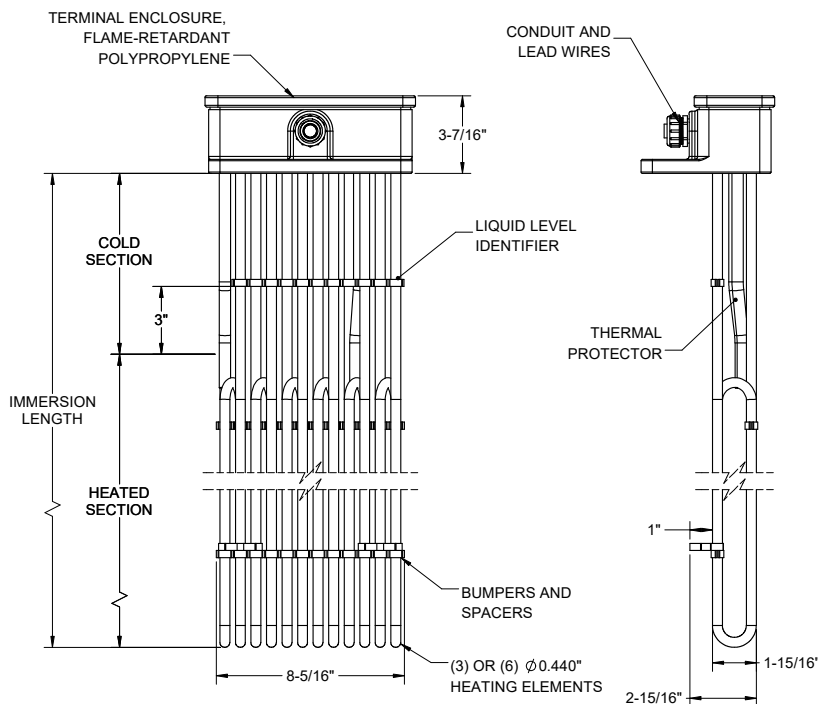
FOR VERTICAL INSTALLATION ONLY

DSW12 SERIES, DERATED METAL OVER THE SIDE HEATERS							
SPECIFICATIONS					304 SS	316 SS	TITANIUM
Volts (3-PH)	Watts	Immersion Length	Heated Length	Cold Length	Part Number	Part Number	Part Number
240	4,500	16"	8"	8"	DSW12-3F-4.5E16-8-T*	DSW12-3S-4.5E16-8-T*	DSW12-3T-4.5E16-8-T*
480					DSW12-3F-4.5M16-8-T*	DSW12-3S-4.5M16-8-T*	DSW12-3T-4.5M16-8-T*
240	6,000	18"	10"	8"	DSW12-3F-6E18-8-T*	DSW12-3S-6E18-8-T*	DSW12-3T-6E18-8-T*
480					DSW12-3F-6M18-8-T*	DSW12-3S-6M18-8-T*	DSW12-3T-6M18-8-T*
240	7,500	21"	13"	8"	DSW12-3F-7.5E21-8-T*	DSW12-3S-7.5E21-8-T*	DSW12-3T-7.5E21-8-T*
480					DSW12-3F-7.5M21-8-T*	DSW12-3S-7.5M21-8-T*	DSW12-3T-7.5M21-8-T*
240	9,000	23"	15"	8"	DSW12-3F-9E23-8-T*	DSW12-3S-9E23-8-T*	DSW12-3T-9E23-8-T*
480					DSW12-3F-9M23-8-T*	DSW12-3S-9M23-8-T*	DSW12-3T-9M23-8-T*
240	12,000	30"	21"	9"	DSW12-3F-12E30-9-T*	DSW12-3S-12E30-9-T*	DSW12-3T-12E30-9-T*
480					DSW12-3F-12M30-9-T*	DSW12-3S-12M30-9-T*	DSW12-3T-12M30-9-T*
240	15,000	35"	26"	9"	DSW12-3F-15E35-9-T*	DSW12-3S-15E35-9-T*	DSW12-3T-15E35-9-T*
480					DSW12-3F-15M35-9-T*	DSW12-3S-15M35-9-T*	DSW12-3T-15M35-9-T*
240	18,000	40"	30"	10"	DSW12-6F-18E40-10-T*	DSW12-6S-18E40-10-T*	DSW12-6T-18E40-10-T*
480					DSW12-6F-18M40-10-T*	DSW12-6S-18M40-10-T*	DSW12-6T-18M40-10-T*
480	20,000	44"	34"	10"	DSW12-6F-20M44-10-T*	DSW12-6S-20M44-10-T*	DSW12-6T-20M44-10-T*
480	22,000	47"	37"	10"	DSW12-6F-22M47-10-T*	DSW12-6S-22M47-10-T*	DSW12-6T-22M47-10-T*
480	26,000	54"	44"	10"	DSW12-6F-26M54-10-T*	DSW12-6S-26M54-10-T*	DSW12-6T-26M54-10-T*
480	29,000	59"	49"	10"	DSW12-6F-29M59-10-T*	DSW12-6S-29M59-10-T*	DSW12-6T-29M59-10-T*

*Thermal protector options and part numbers can be found in the tables below.

Derated to 18 Watts per Square Inch Standard.

REFERENCE DIMENSIONS



Thermal Protector Guide		
TYPE	MODEL NUMBER	TEMP RANGE
Replaceable Thermal Protectors	T1	Up to 180°F
	T4	Up to 230°F
	T5*	Up to 300°F
Resettable Thermal Protectors	T2	Up to 180°F
	T6	Up to 230°F
	T7*	Up to 300°F

*Not UL/CSA Listed

ORDERING AND CONTACT INFO

FOR ORDERS, PLEASE CONTACT YOUR LOCAL METAL FINISHING EQUIPMENT SUPPLIER.
FOR MORE INFO ON OUR PRODUCTS SEE OUR WEBSITE AT WWW.HEATMAXHEATERS.COM