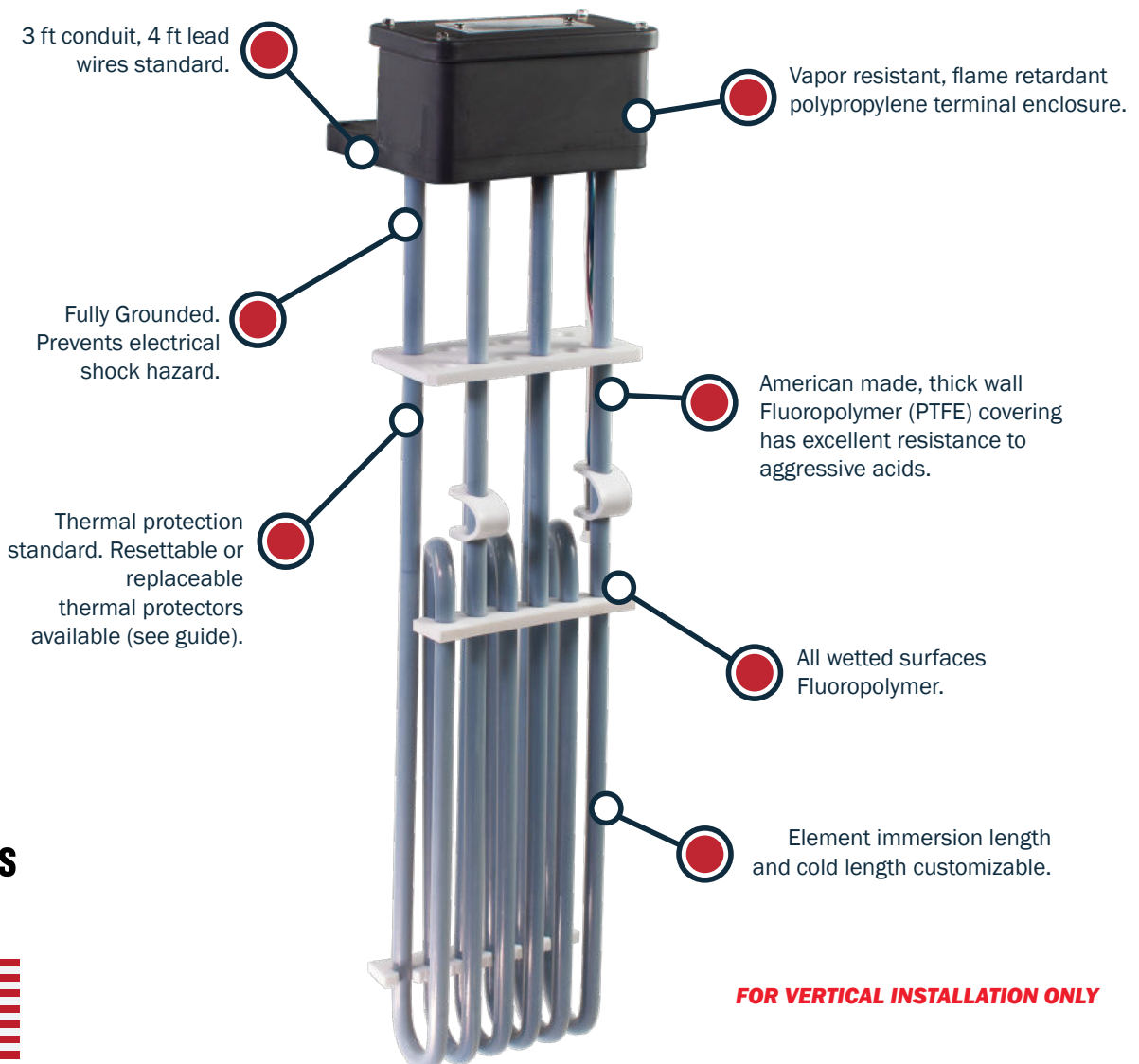


TFS SERIES: PTFE HEATERS

MODEL TFS6

QUICK SPECIFICATIONS		CUSTOMIZABLE FEATURES
WATTAGES:	1,000 - 18,000 Watts	The following are configurable based on application requirements: <ul style="list-style-type: none"> • Wattage, Voltage, Phase • Immersion Length • Cold Length • Conduit Length • Element Sheath Material
VOLTAGES:	120 - 600 Volts	
PHASE:	1 & 3 Phase	
TEMP RANGE:		
UL/CSA Listed Version: Suitable in Solutions up to 212 ° F		
WATT DENSITY:	10 Watts / in² Standard	
Built in polypropylene guards available, add "-G" to end of part number for guard configuration. For custom configurations or additional options, please consult factory.		



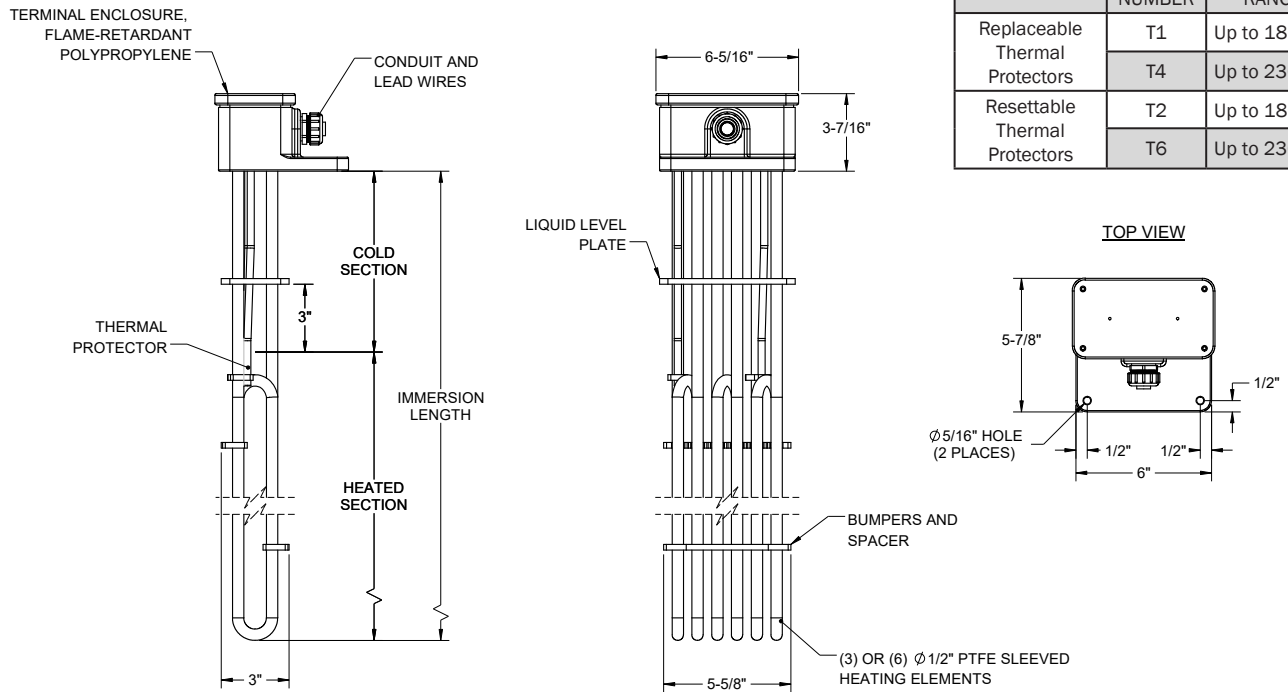
FOR VERTICAL INSTALLATION ONLY



TFS6 PTFE HEATERS					
PART NUMBER	SPECIFICATIONS				
	Volts (3-PH)	Watts	Immersion Length	Heated Length	Cold Length
TFS6-3-1A15-7-T*	120	1,000	15"	8"	7"
TFS6-3-1M15-7-T*	480				
TFS6-3-2E17-8-T*	240	2,000	17"	9"	8"
TFS6-3-2M17-8-T*	480				
TFS6-3-3E23-8-T*	240	3,000	23"	15"	8"
TFS6-3-3M23-8-T*	480				
TFS6-3-4E29-8-T*	240	4,000	29"	21"	8"
TFS6-3-4M29-8-T*	480				
TFS6-3-5E32-7-T*	240	5,000	32"	25"	7"
TFS6-3-5M32-7-T*	480				
TFS6-3-6E35-7-T*	240	6,000	35"	28"	7"
TFS6-3-6M35-7-T*	480				
TFS6-3-7E43-8-T*	240	7,000	43"	35"	8"
TFS6-3-7M43-8-T*	480				
TFS6-3-8E47-9-T*	240	8,000	47"	38"	9"
TFS6-3-8M47-9-T*	480				
TFS6-3-9E52-9-T*	240	9,000	52"	43"	9"
TFS6-3-9M52-9-T*	480				
TFS6-3-10E59-12-T*	240	10,000	59"	47"	12"
TFS6-3-10M59-12-T*	480				
TFS6-6-12E68-13-T*	240	12,000	68"	55"	13"
TFS6-6-12M68-13-T*	480				

*Thermal protector options and part numbers can be found in the tables below.

REFERENCE DIMENSIONS



Thermal Protector Guide		
TYPE	MODEL NUMBER	TEMP RANGE
Replaceable Thermal Protectors	T1	Up to 180°F
	T4	Up to 230°F
Resettable Thermal Protectors	T2	Up to 180°F
	T6	Up to 230°F

ORDERING AND CONTACT INFO

FOR ORDERS, PLEASE CONTACT YOUR LOCAL METAL FINISHING EQUIPMENT SUPPLIER.
FOR MORE INFO ON OUR PRODUCTS SEE OUR WEBSITE AT WWW.HEATMAXHEATERS.COM