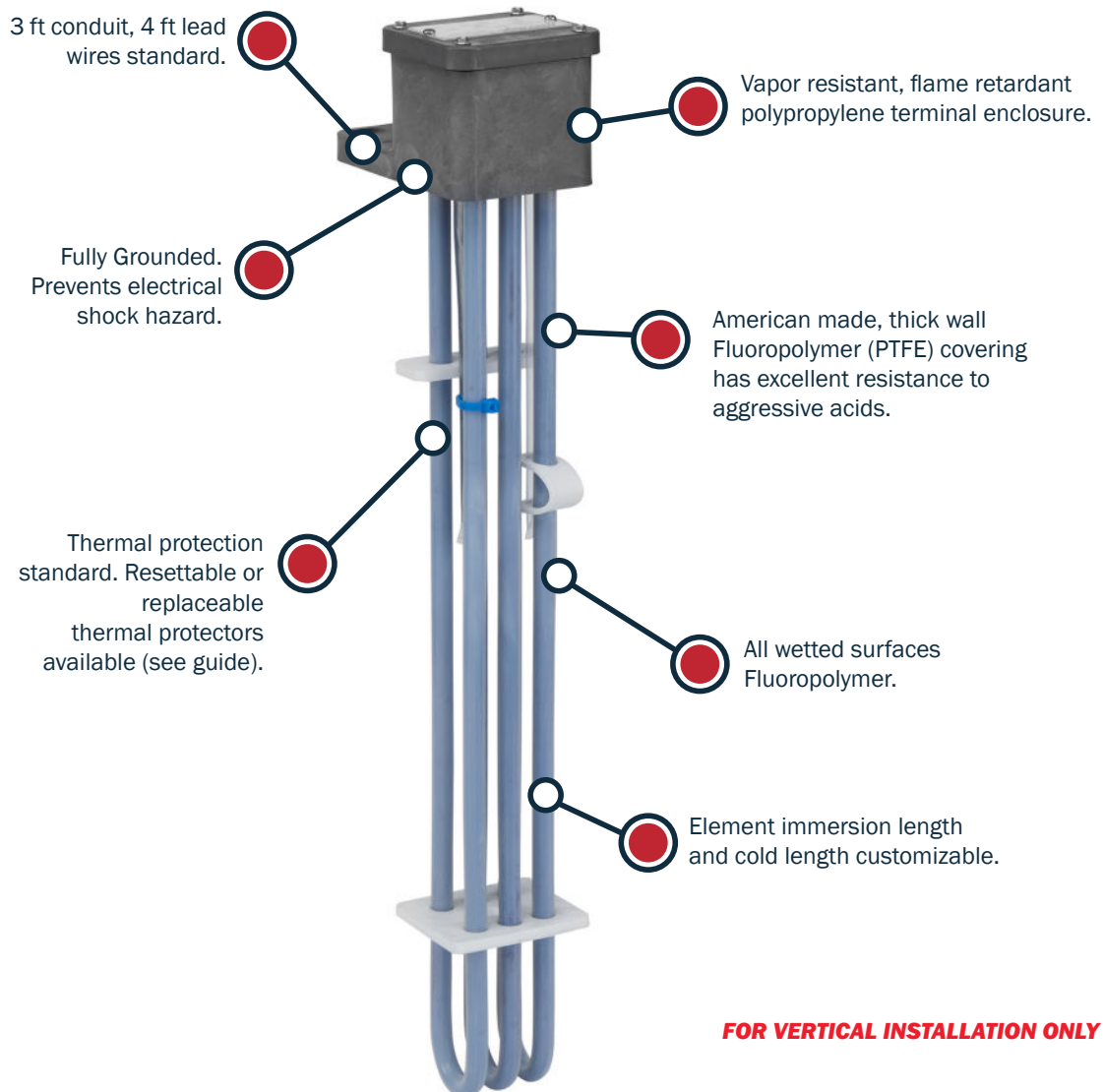


TFS SERIES: PTFE HEATERS

MODEL TFS3

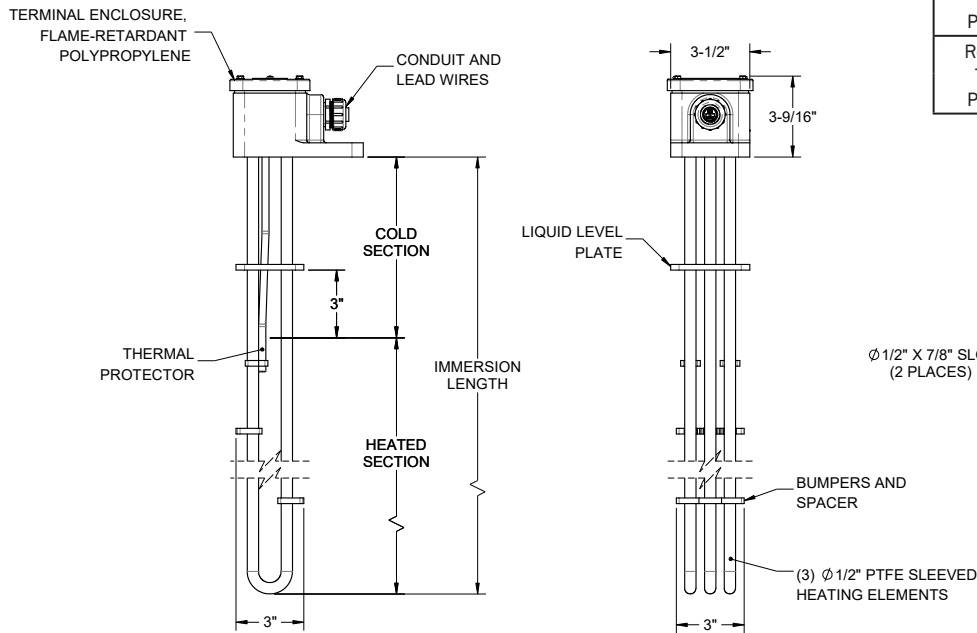
QUICK SPECIFICATIONS		CUSTOMIZABLE FEATURES
WATTAGES:	1,000 - 12,000 Watts	The following are configurable based on application requirements: <ul style="list-style-type: none"> • Wattage, Voltage, Phase • Immersion Length • Cold Length • Conduit Length • Element Sheath Material
VOLTAGES:	120 - 600 Volts	
PHASE:	1 & 3 Phase	
TEMP RANGE:	UL/CSA Listed Version: Suitable in Solutions up to 212 ° F	
WATT DENSITY:	10 Watts / in² Standard	
Built in polypropylene guards available, add "-G" to end of part number for guard configuration. For custom configurations or additional options, please consult factory.		



TFS3 PTFE HEATERS					
PART NUMBER	SPECIFICATIONS				
	Volts (1-PH)	Watts	Immersion Length	Heated Length	Cold Length
TFS3-3-05AX11-6-T*	120	500	11"	5"	6"
TFS3-3-1AX17-8-T*	120	1,000	17"	9"	8"
TFS3-3-1EX17-8-T*	240				
TFS3-3-2AX29-8-T*	120	2,000	29"	21"	8'
TFS3-3-2EX29-8-T*	240				
TFS3-3-2MX29-8-T*	480				
TFS3-3-3EX35-7-T*	240	3,000	35"	28"	7"
TFS3-3-3MX35-7-T*	480				
TFS3-3-4EX47-9-T*	240	4,000	47"	38"	9"
TFS3-3-4MX47-9-T*	480				
TFS3-3-5EX59-12-T*	240	5,000	59"	47"	12"
TFS3-3-5MX59-12-T*	480				
TFS3-3-6EX68-13-T*	240	6,000	68"	55"	13"
TFS3-3-6MX68-13-T*	480				

*Thermal protector options and part numbers can be found in the tables below.

REFERENCE DIMENSIONS



Thermal Protector Guide		
TYPE	MODEL NUMBER	TEMP RANGE
Replaceable Thermal Protectors	T1	Up to 180°F
	T4	Up to 230°F
Resettable Thermal Protectors	T2	Up to 180°F
	T6	Up to 230°F

ORDERING AND CONTACT INFO

FOR ORDERS, PLEASE CONTACT YOUR LOCAL METAL FINISHING EQUIPMENT SUPPLIER.
FOR MORE INFO ON OUR PRODUCTS SEE OUR WEBSITE AT WWW.HEATMAXHEATERS.COM