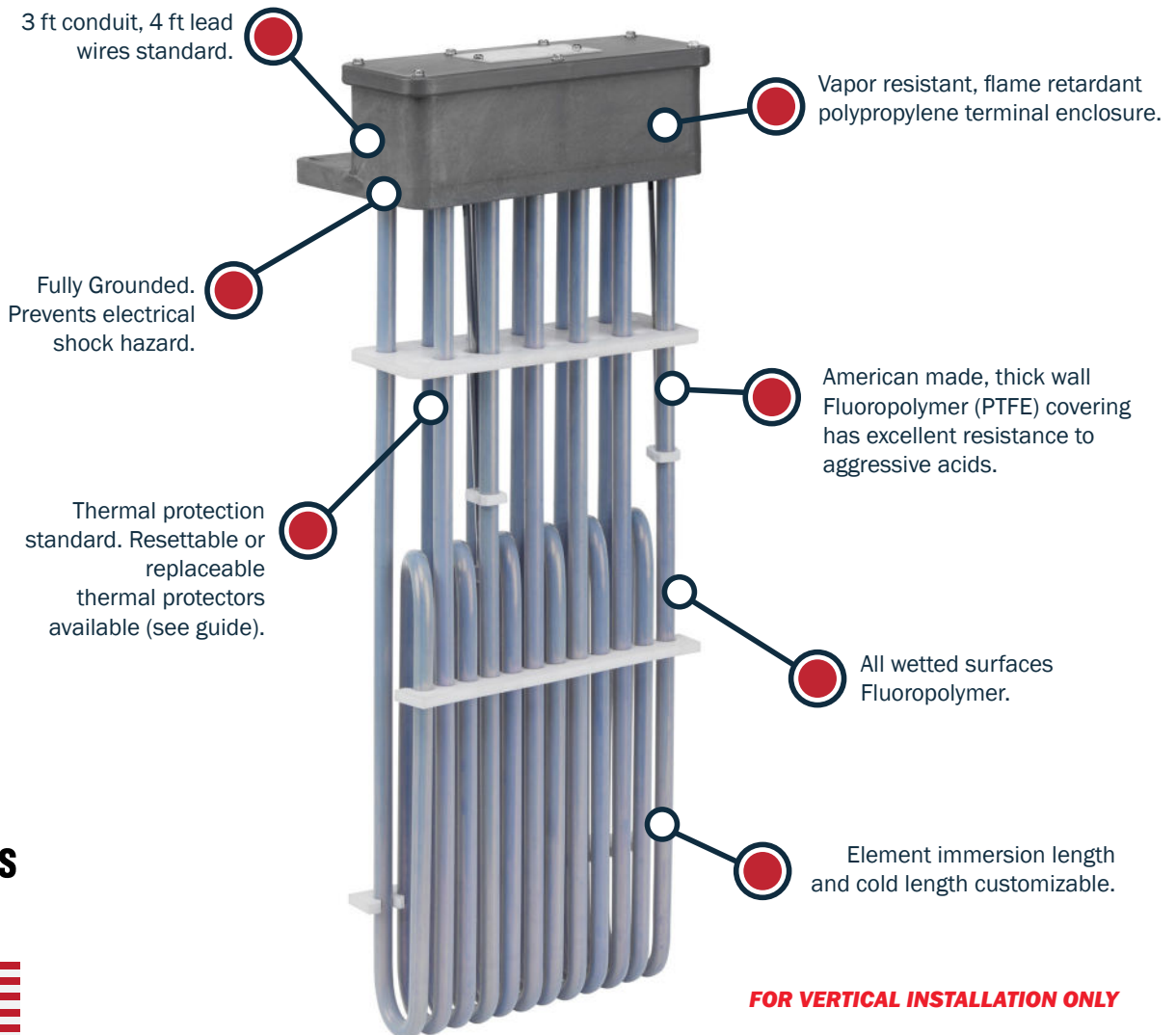


# TFS SERIES: PTFE HEATERS

## MODEL TFS12

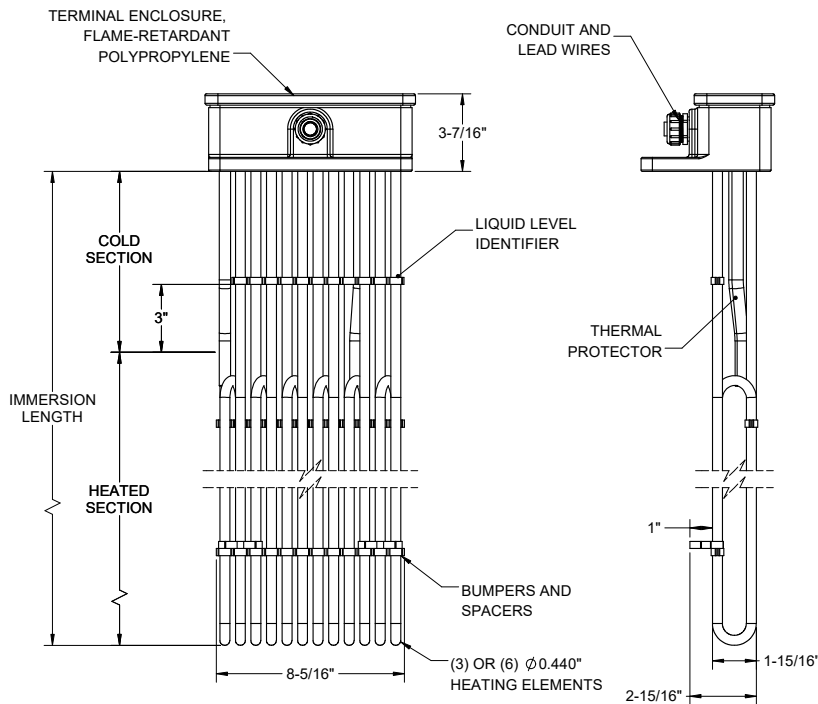
QUICK SPECIFICATIONS		CUSTOMIZABLE FEATURES
<b>WATTAGES:</b>	1,500 - 18,000 Watts	The following are configurable based on application requirements: <ul style="list-style-type: none"> <li>• Wattage, Voltage, Phase</li> <li>• Immersion Length</li> <li>• Cold Length</li> <li>• Conduit Length</li> <li>• Element Sheath Material</li> </ul>
<b>VOLTAGES:</b>	120 - 600 Volts	
<b>PHASE:</b>	1 & 3 Phase	
<b>TEMP RANGE:</b>	UL/CSA Listed Version: Suitable in Solutions up to <b>212 ° F</b>	
<b>WATT DENSITY:</b>	<b>10 Watts / in<sup>2</sup> Standard</b>	
Built in polypropylene guards available, add "-G" to end of part number for guard configuration. For custom configurations or additional options, please consult factory.		



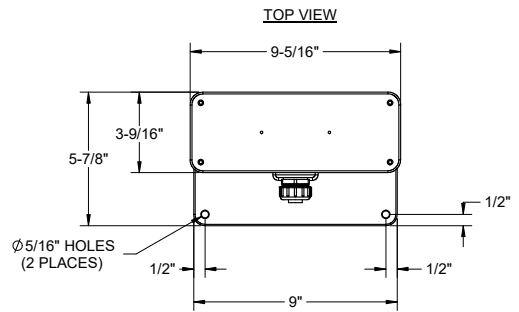
TFS12 PTFE HEATERS					
PART NUMBER	SPECIFICATIONS				
	Volts (3-PH)	Watts	Immersion Length	Heated Length	Cold Length
TFS12-3-1.5A15-7-T*	120	1,500	15	8	7
TFS12-3-1.5E15-7-T*	240				
TFS12-3-3E15-7-T*	240	3,000	15	8	7
TFS12-3-3M15-7-T*	480				
TFS12-3-4E18-8-T*	240	4,000	18	10	8
TFS12-3-4M18-8-T*	480				
TFS12-3-5E21-8-T*	240	5,000	21	13	8
TFS12-3-5M21-8-T*	480				
TFS12-3-6E23-8-T*	240	6,000	23	15	8
TFS12-3-6M23-8-T*	480				
TFS12-3-8E30-10-T*	240	8,000	30	20	10
TFS12-3-8M30-10-T*	480				
TFS12-3-9E30-8-T*	240	9,000	30	22	8
TFS12-3-9M30-8-T*	480				
TFS12-6-12E37-8-T*	240	12,000	37	29	8
TFS12-6-12M37-8-T*	480				
TFS12-6-15E44-8-T*	240	15,000	44	36	8
TFS12-6-15M44-8-T*	480				
TFS12-6-18E50-8-T*	240	18,000	50	42	8
TFS12-6-18M50-8-T*	480				
TFS12-6-21M58-8-T*	480	21,000	58	50	8

\*Thermal protector options and part numbers can be found in the tables below.

## REFERENCE DIMENSIONS



Thermal Protector Guide		
TYPE	MODEL NUMBER	TEMP RANGE
Replaceable Thermal Protectors	T1	Up to 180°F
	T4	Up to 230°F
Resettable Thermal Protectors	T2	Up to 180°F
	T6	Up to 230°F



## ORDERING AND CONTACT INFO

FOR ORDERS, PLEASE CONTACT YOUR LOCAL METAL FINISHING EQUIPMENT SUPPLIER.  
FOR MORE INFO ON OUR PRODUCTS SEE OUR WEBSITE AT [WWW.HEATMAXHEATERS.COM](http://WWW.HEATMAXHEATERS.COM)