

TFL SERIES: PTFE L-SHAPED HEATERS

MODEL TFL6

QUICK SPECIFICATIONS		CUSTOMIZABLE FEATURES
WATTAGES:	500 - 9,000 Watts	The following are configurable based on application requirements: <ul style="list-style-type: none"> • Wattage, Voltage, Phase • Immersion Length • Cold Length • Conduit Length • Element Sheath Material
VOLTAGES:	120 - 600 Volts	
PHASE:	1 & 3 Phase	
TEMP RANGE:	UL/CSA Listed Version: Suitable in Solutions up to 212 ° F	
WATT DENSITY:	10 Watts / in² Standard	
Built in polypropylene guards available, add "-G" to end of part number for guard configuration. For custom configurations or additional options, please consult factory.		



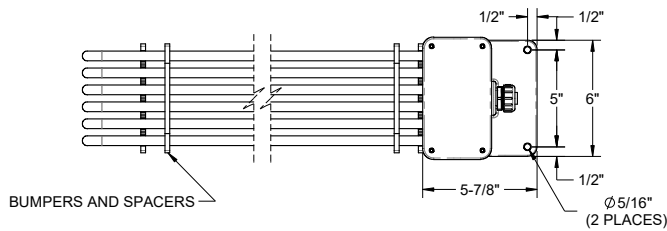
FOR VERTICAL INSTALLATION ONLY



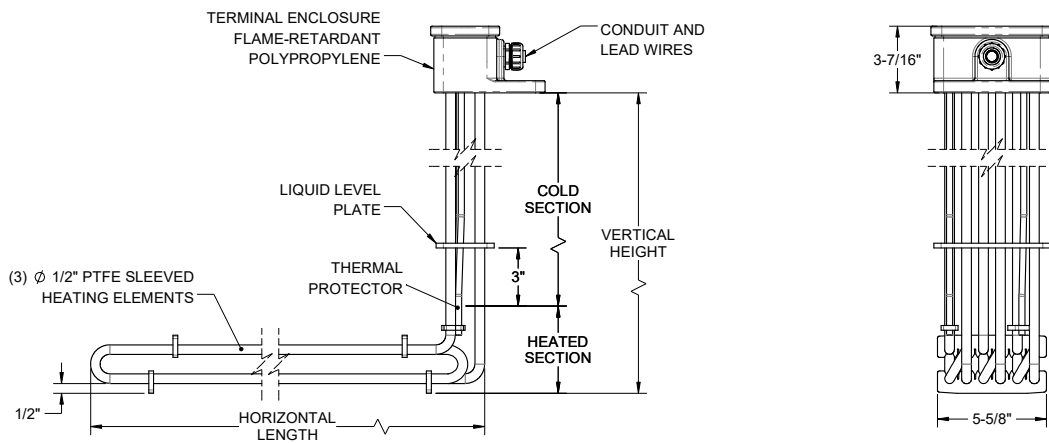
TFL6 PTFE HEATERS					
PART NUMBER	SPECIFICATIONS				
	Volts (3-PH)	Watts	Vertical Length	Max Vertical Length	Horizontal Length
TFL6-3-05A8R18-T*	120	500	18"	107"	8"
TFL6-3-05E8R18-T*	240			107"	8"
TFL6-3-1A8R18-T*	120	1,000		107"	8"
TFL6-3-1E8R18-T*	240			96"	11"
TFL6-3-2E11R18-T*	240	2,000		96"	15"
TFL6-3-2M11R18-T*	480			84"	20"
TFL6-3-3E15R18-T*	240	3,000		84"	25"
TFL6-3-3M15R18-T*	480			80"	30"
TFL6-3-4E20R18-T*	240	4,000		80"	35"
TFL6-3-4M20R18-T*	480			72"	40"
TFL6-3-5E25R18-T*	240	5,000		72"	42"
TFL6-3-5M25R18-T*	480			60"	40"
TFL6-3-6E30R18-T*	240	6,000		60"	40"
TFL6-3-6M30R18-T*	480			50"	42"
TFL6-3-7E35R18-T*	240	7,000		50"	42"
TFL6-3-7M35R18-T*	480			45"	42"
TFL6-3-8E40R18-T*	240	8,000		45"	42"
TFL6-3-8M40R18-T*	480				
TFL6-3-9E42R18-T*	240	9,000			
TFL6-3-9M42R18-T*	480				

*Thermal protector options and part numbers can be found in the tables below.

REFERENCE DIMENSIONS



Thermal Protector Guide		
TYPE	MODEL NUMBER	TEMP RANGE
Replaceable Thermal Protectors	T1	Up to 180° F
	T4	Up to 230° F
Resettable Thermal Protectors	T2	Up to 180° F
	T6	Up to 230° F



ORDERING AND CONTACT INFO

FOR ORDERS, PLEASE CONTACT YOUR LOCAL METAL FINISHING EQUIPMENT SUPPLIER.
FOR MORE INFO ON OUR PRODUCTS SEE OUR WEBSITE AT WWW.HEATMAXHEATERS.COM