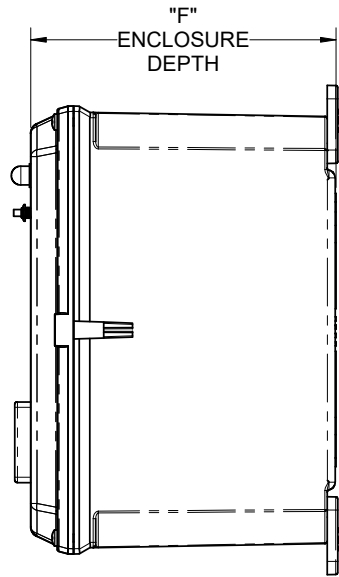
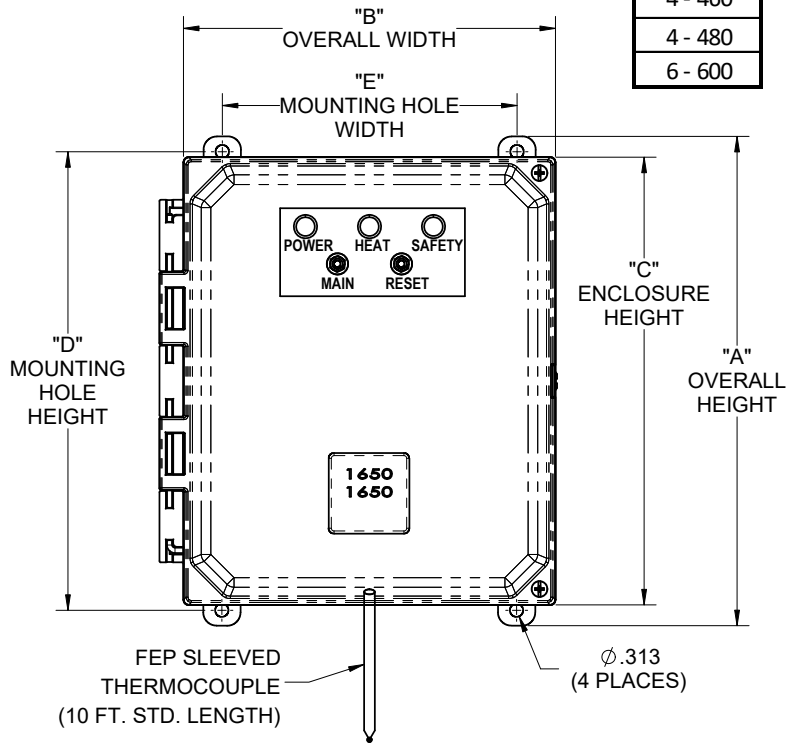


| Control Type | - | Version | Voltage | Amperage | - | Standard Options |
|--------------|---|---------|---------|----------|---|--|
| TCD | - | 3 | 1 - 120 | 30 | - | Blank = Standard options, 10 ft. Thermocouple |
| | | | 2 - 208 | 50 | | ## = Custom Length FEP protected Type "J" Thermocouple |
| | | | 2 - 220 | 70 | | N4XSS = Nema 4X, 12" x 12" x 6" Stainless Enclosure |
| | | | 2 - 240 | 90 | | XXXX = Custom drawing extension |
| | | | 3 - 380 | 135 | | |
| | | | 5 - 415 | | | |
| | | | 4 - 440 | | | |
| | | | 4 - 460 | | | |
| | | | 4 - 480 | | | |
| | | | 6 - 600 | | | |



| | Dimensions | 30-70 Amps | 90-135 Amps |
|---|----------------------|-------------------|-------------------|
| - | Nominal Size | 10" x 8" x 6" | 12" x 10" x 6" |
| A | Overall Height | 12.07" (307mm) | 13.69" (348mm) |
| B | Overall Width | 8.53" (217mm) | 10.54" (268mm) |
| C | Enclosure Height | 10.54" (268mm) | 12.54" (318mm) |
| D | Mounting Hole Height | 11.13" (283mm) | 13.13" (334mm) |
| E | Mounting Hole Width | 5.63" (143mm) | 7.63" (194mm) |
| F | Enclosure Depth | 7.47" (190mm) | 7.47" (190mm) |

| REV | BY | DATE | DESCRIPTION |
|-----|-----|----------|---|
| D | DLS | 12/05/23 | ADDED 380 AND 415 VOLTAGE OPTIONS |
| C | DLS | 08/03/23 | CORRECT 120A TO 135A IN DIMENSION TABLE |
| B | DLS | 06/20/23 | CHANGED 120 AMP TO 135 AMP TO REFLECT RESISTIVE AMP RATING OF RELAY |

UNLESS OTHERWISE SPECIFIED DIMENSIONS ARE IN INCHES



| ANGLES | .XX | .XXX | X/X |
|--------|------|-------|------|
| ±2° | ±.01 | ±.005 | ±1/8 |

INTERPRET GEOMETRIC DIMENSIONS PER ASME Y14.5-2009

MATERIAL SEE NOTES

PART NUMBER SEE TABLE

| DRAWN BY | DATE |
|----------|-----------|
| DLS | 2/10/2023 |

CHECKED BY DATE

HEATMAX HEATERS A GLO-QUARTZ Company
7084 MAPLE ST., MENTOR, OH 44060

TITLE:
SALES, TCD CONTROLLER

| DRAWING NUMBER | REVISION | SHEET NO. |
|----------------|----------|-----------|
| 20-0181 | D | 1 OF 1 |

THE INFORMATION CONTAINED IN THIS DRAWING IS THE SOLE PROPERTY OF GLO-QUARTZ®. ANY REPRODUCTION IN PART OR AS A WHOLE WITHOUT THE WRITTEN PERMISSION OF GLO-QUARTZ® IS PROHIBITED.